



CONTRACT



RESIDENTIAL

PRODUCT INFORMATION

- The Forest Skylight System is a combination of different Forest systems (FMS and MTS)
- Easy assembling and smooth operation guaranteed
- Possible to operate with one motor or a tandem application
- Both 220V FMS motor or 24V Shuttle motor applicable
- Maximum size 7 meter long and 3,5 meter wide (without middle support)
- Bendable; it can be curved with a 20 cm (8") radius or continuously curved
- The fabric can be made to cover wall to wall
- For horizontal and vertical installation
- Colour available: white

- ① Drive Shaft Connector
- ② Bearing Drive Shaft
- ③ Drive Shaft Rod FFS
- ④ Motor Cover Profile
- ⑤ Cover Profile Return
- ⑥ Velcro
- ⑦ FSS Master Carrier Right
- ⑧ FSS Master Carrier Left
- ⑨ FSS carrier plus holder
- ⑩ Master Carrier Fixer
- ⑪ FSS Rod 8mm
- ⑫ MTS Track

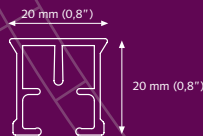
FOR USE IN

Hotels - offices - residences or any location where a motorized Skylight system is required

PROFILE

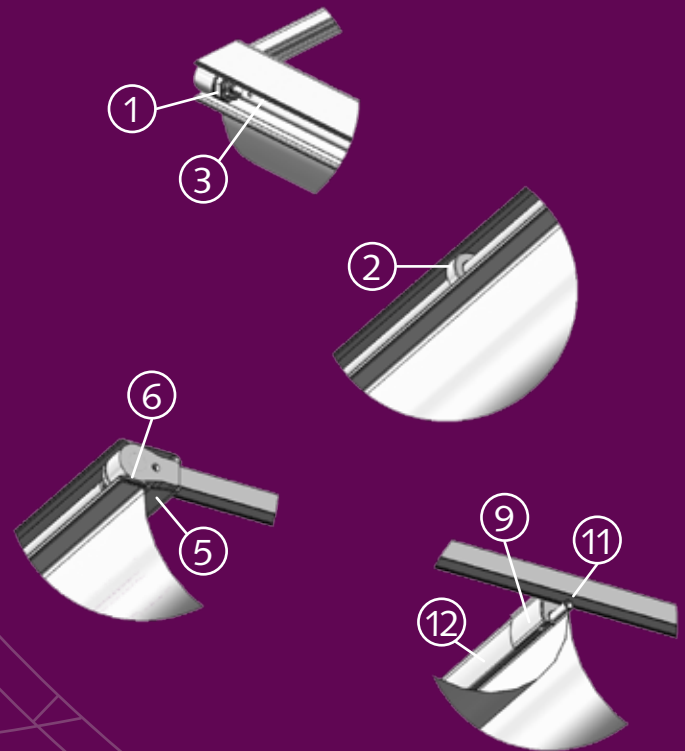
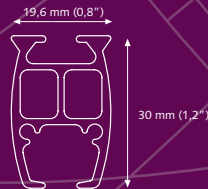
FMS TRACK

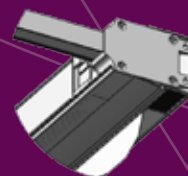
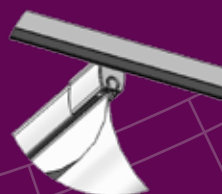
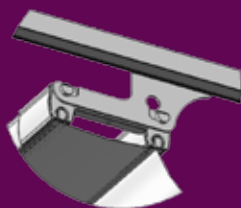
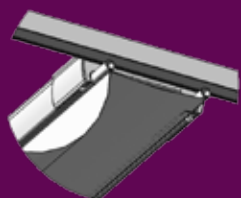
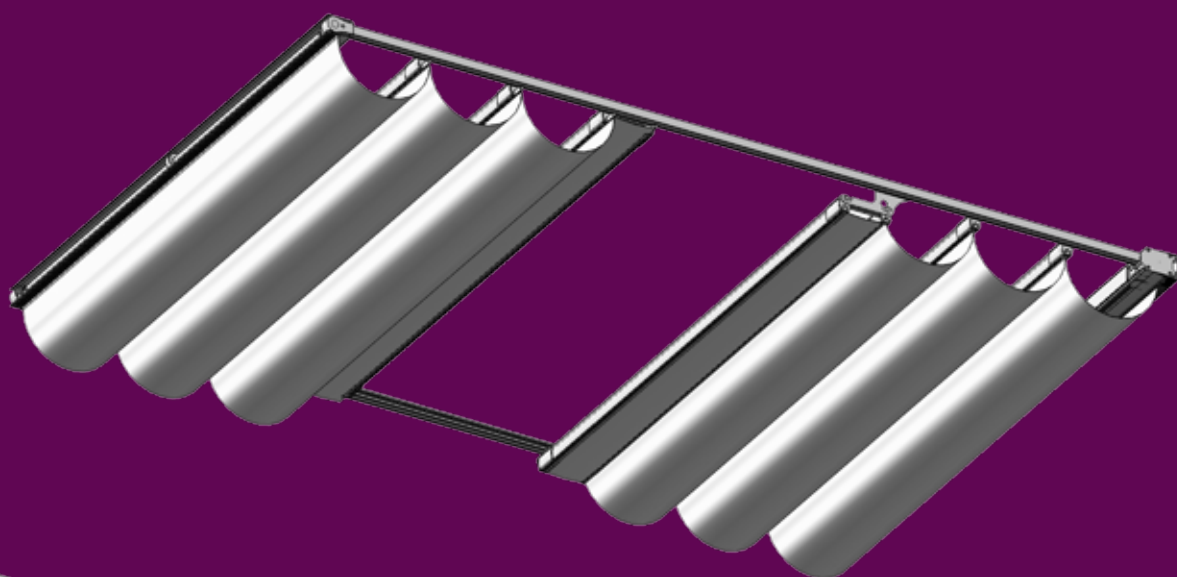
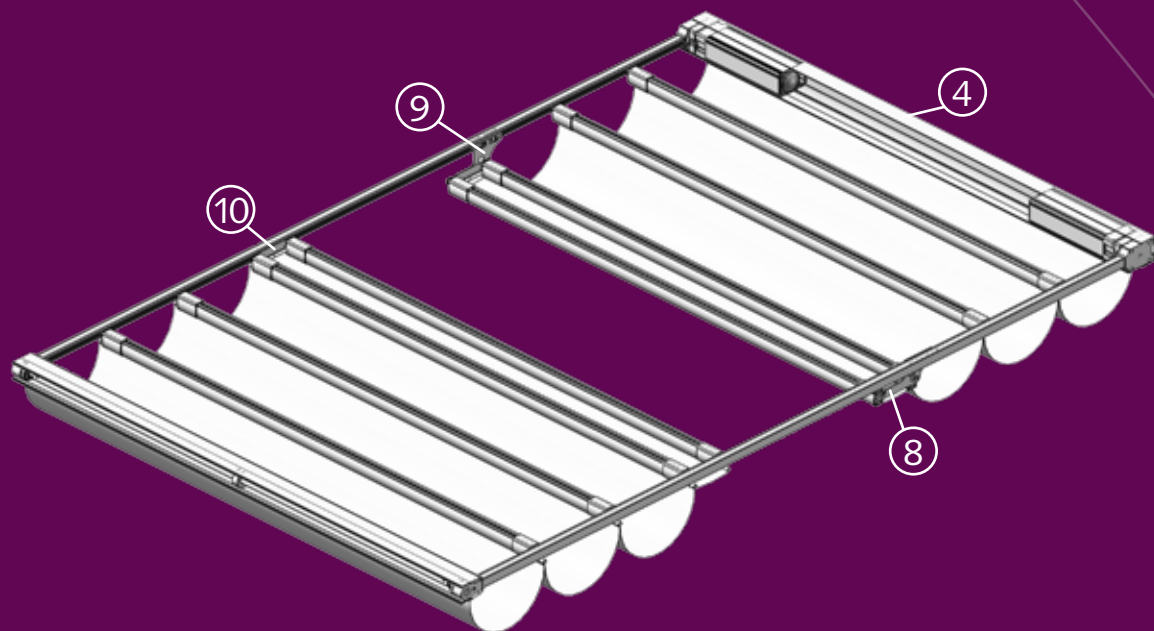
- Weight: 303 grams per meter (3,25 ounce per ft.)
- Aluminium Extrusion
- Size: 20 x 20 mm (0.79 x 0.79")
- Scale 1:1



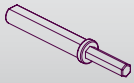
MTS TRACK

- Weight: 500 grams per meter (5,36 ounce per ft.)
- Aluminum Extrusion
- Size: 20 x 30 mm (0.79 x 1.2")
- Scale 1:1





DRIVE SHAFT CONNECTOR



to connect both endpulley of the FMS track with eachother 7103011000
10/box

FSS MASTER CARRIER RIGHT



Will go through a curve. The carrier ensures a maximum overlap 7114301000
25/box

BEARING DRIVE SHAFT



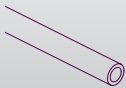
Placed on the Suspension Rod for the right stability 7103012000
10/box

FSS MASTER CARRIER LEFT



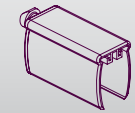
Will go through a curve. The carrier ensures a maximum overlap 7114401000
25/box

DRIVE SHAFT ROD FFS



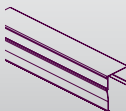
To connect both end pulleys Length: 5 mtr 4518305000
10/bundle

FSS CARRIER PLUS HOLDER



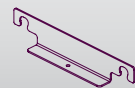
Can be clicked into the FMS track. 7110001000
25/box

MOTOR COVER PROFILE



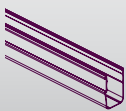
To cover the motor. The fabric can be connected with velcro on the profile Length: 5.80 mtr 7101001580
10/bundle

MASTER CARRIER FIXER



To fix the carrier on the under- and overlap 7114501000
10/box

COVER PROFILE RETURN



To cover the endpulley and the drive shaft rod rod. The fabric can be connected on the velcro Length: 5.80 mtr 7102001580
10/bundle

FSS ROD 8MM



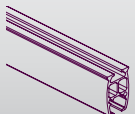
The aluminium rod goes through the fabric. Length 6.00 mtr 7135301600
10/bundle

VELCRO

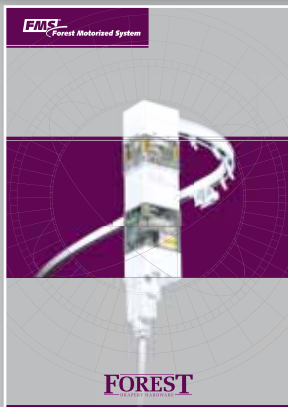


To be used on both profiles to attach the fabric Height: 25mm Length: 1.20 mtr 3416500004
1/box

MTS TRACK



5.80 mtr 4501001580
7.00 mtr 4501001700
To be used as a traverse frame support in combination with The 8mm rod 5/bundle



DISTRIBUTOR:

CURTAIN MOTORS AND CONTROLS

For more information about the FMS track components, curtain motors and controls see our FMS and Forest Shuttle brochures.